






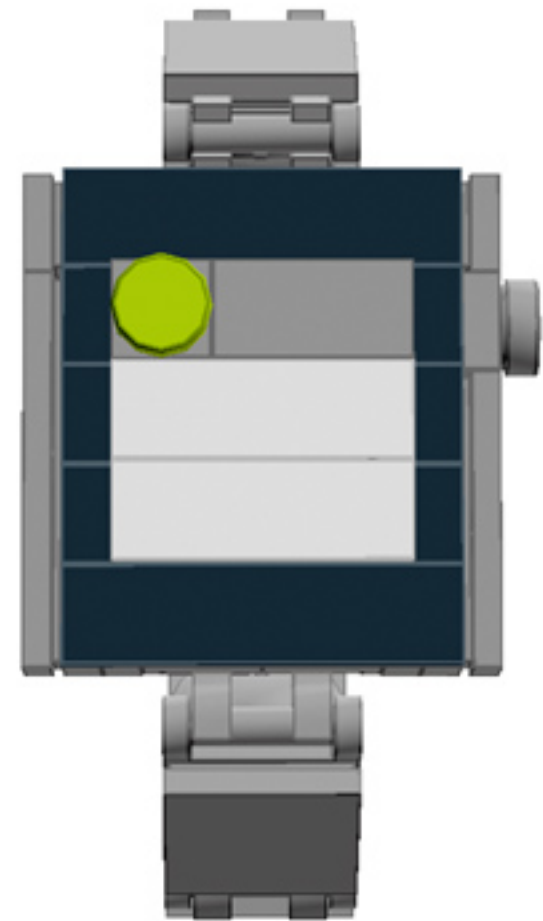


Watch

TEXT EDITION

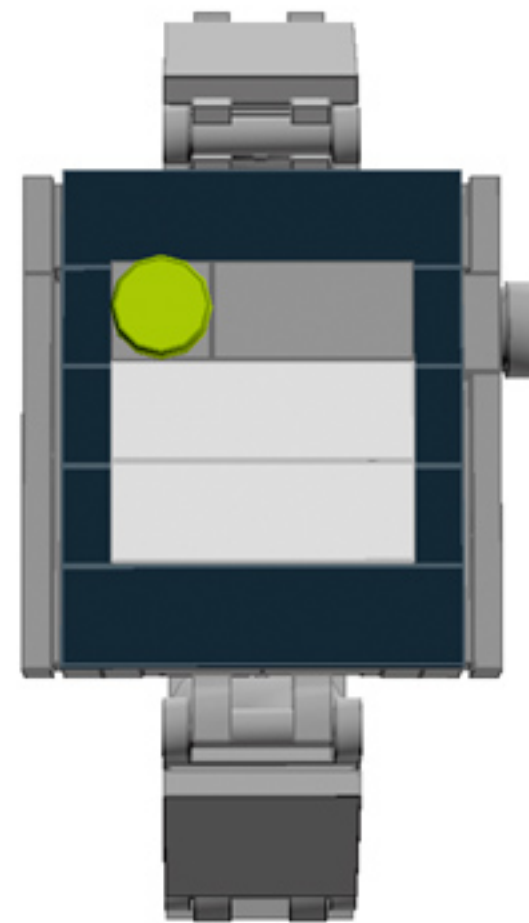
A LEGO® project by Chris McVeigh
chrismcveigh.com

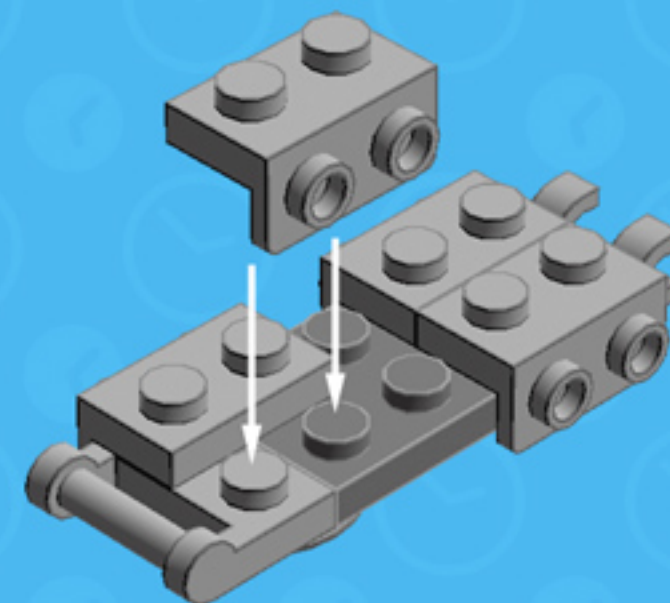
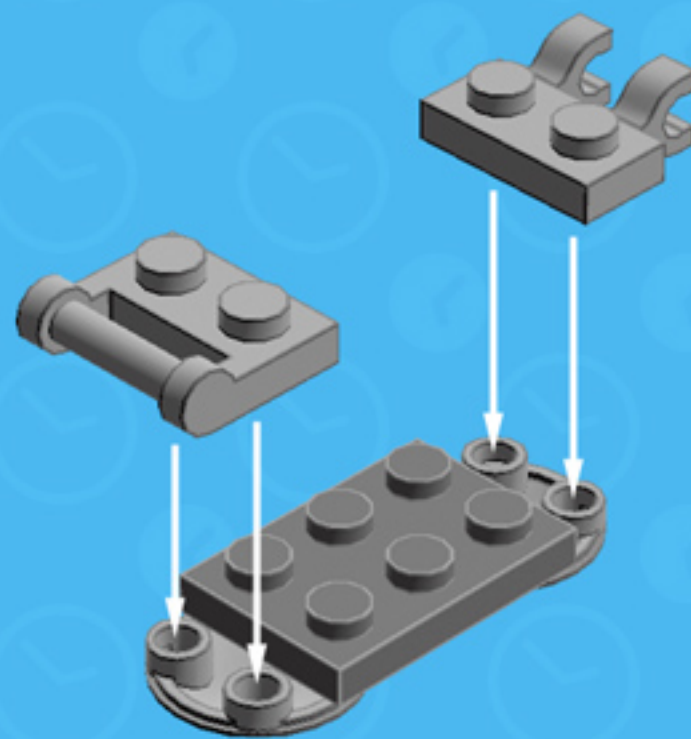
	Element ID	Color	Description	Quantity
	243126	Black	Flat Tile 1X4	2
	302426	Black	Plate 1X1	2
	379426 6092585	Black	Plate 1X2 W. 1 Knob	6
	362326	Black	Plate 1X3	2
	6057878	Bright Yellowish Green	Flat Tile 1X1, Round	1
	4211043	Dark Stone Grey	Plate 2X3	1
	4654582	Medium Stone Grey	Angular Plate 1,5 TOP 1X2 1/2	4
	4211415	Medium Stone Grey	Flat Tile 1X1	2
	4650260	Medium Stone Grey	Flat Tile 1X1, Round	1

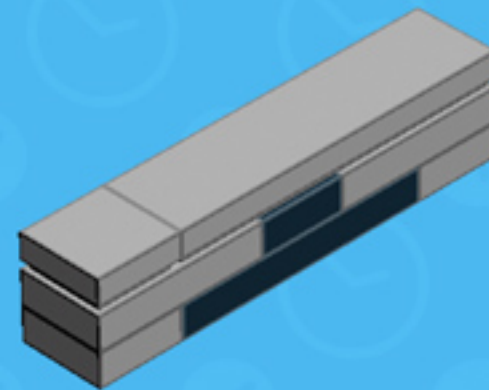


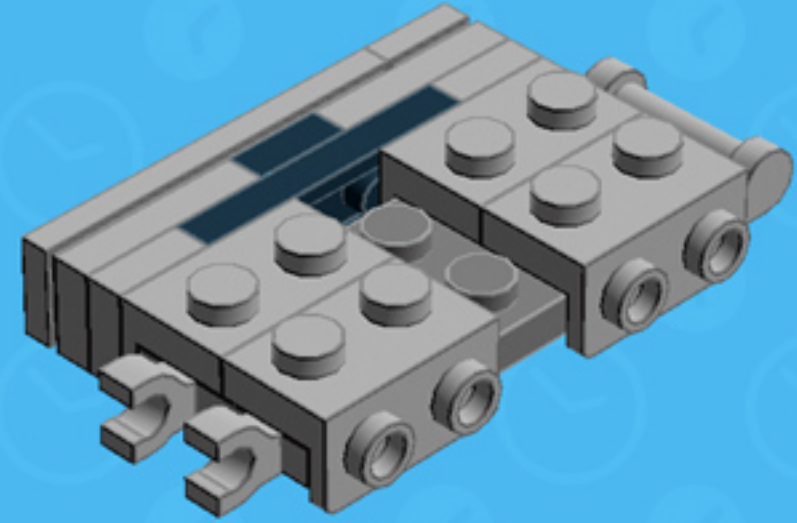
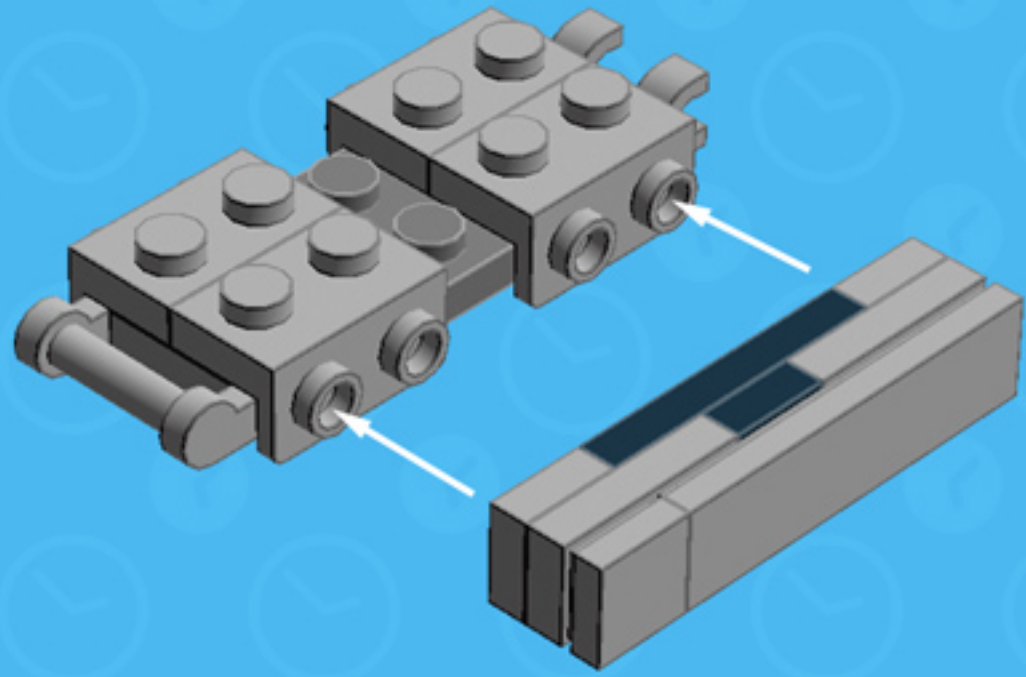


Element ID	Color	Description	Quantity
4211414	Medium Stone Grey	Flat Tile 1X2	1
4558169	Medium Stone Grey	Flat Tile 1X3	1
4211356	Medium Stone Grey	Flat Tile 1X4	1
4211413	Medium Stone Grey	Flat Tile 2X2	7
4211399	Medium Stone Grey	Plate 1X1	6
4211398	Medium Stone Grey	Plate 1X2	5
4244627	Medium Stone Grey	Plate 1X2 W. Stick 3.18	8
4556157	Medium Stone Grey	Plate 1X2 W/Holder, Vertical	8
4278273	Medium Stone Grey	SLIDE SHOE Round 2X2	9
4558168	White	Flat Tile 1X3	2

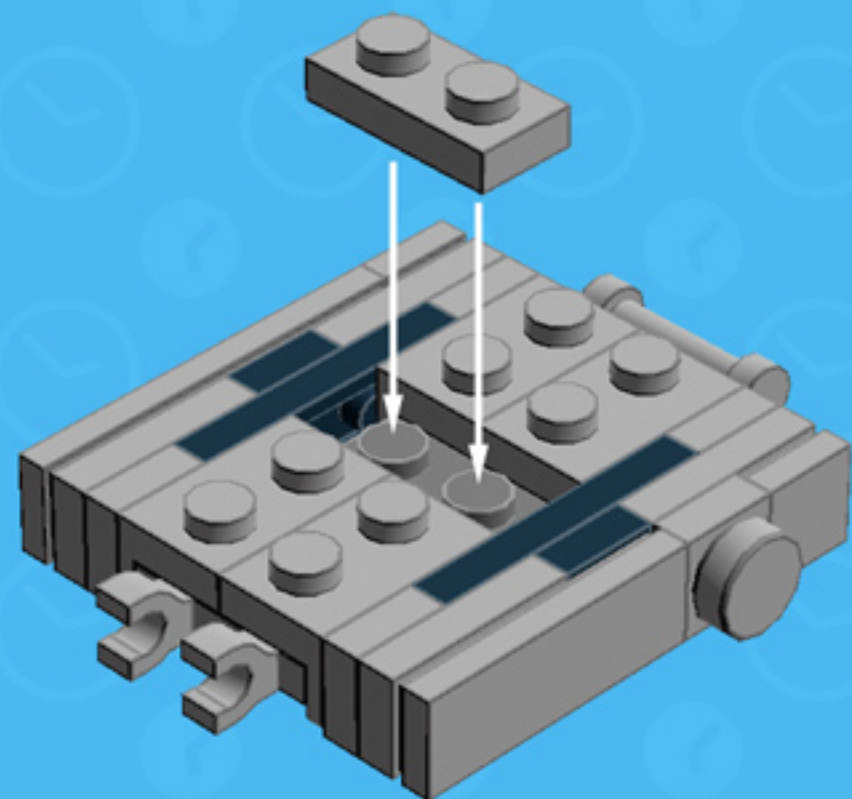
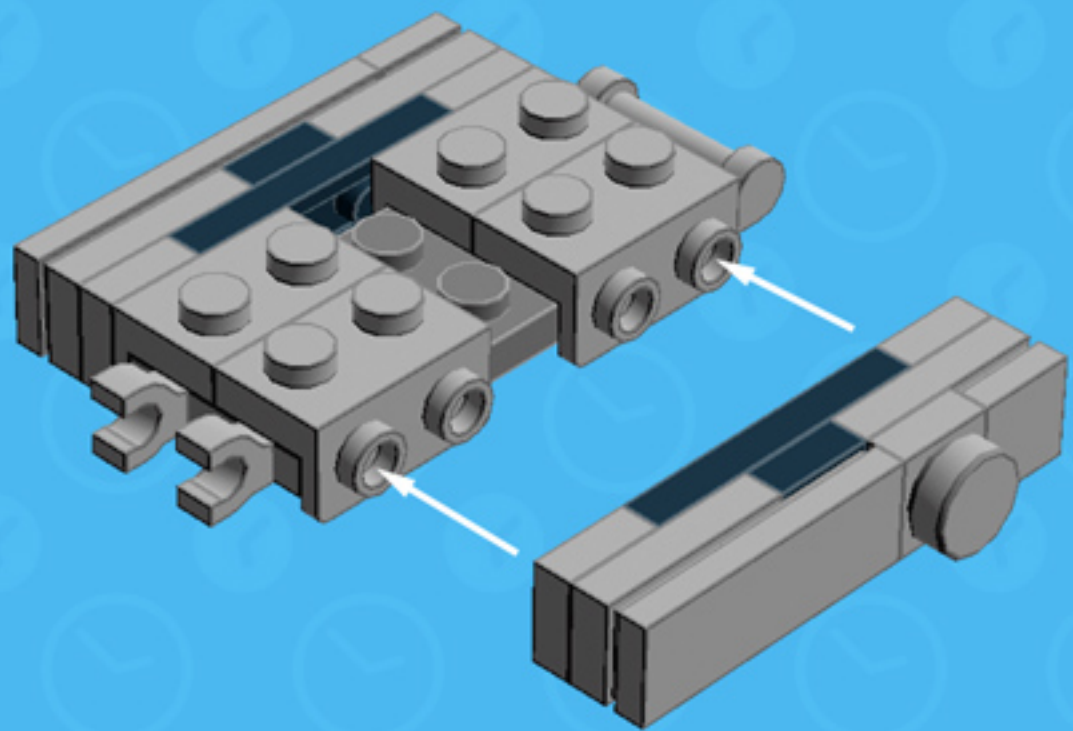


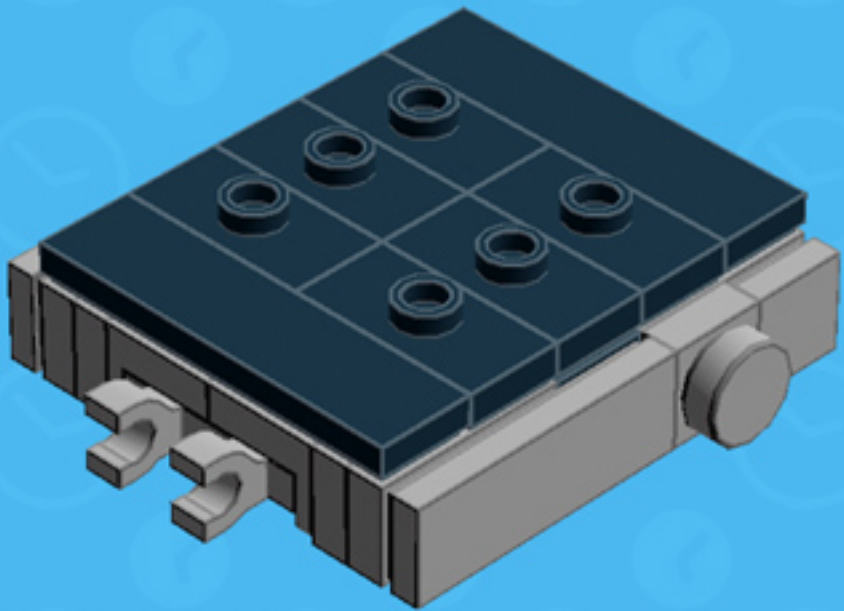
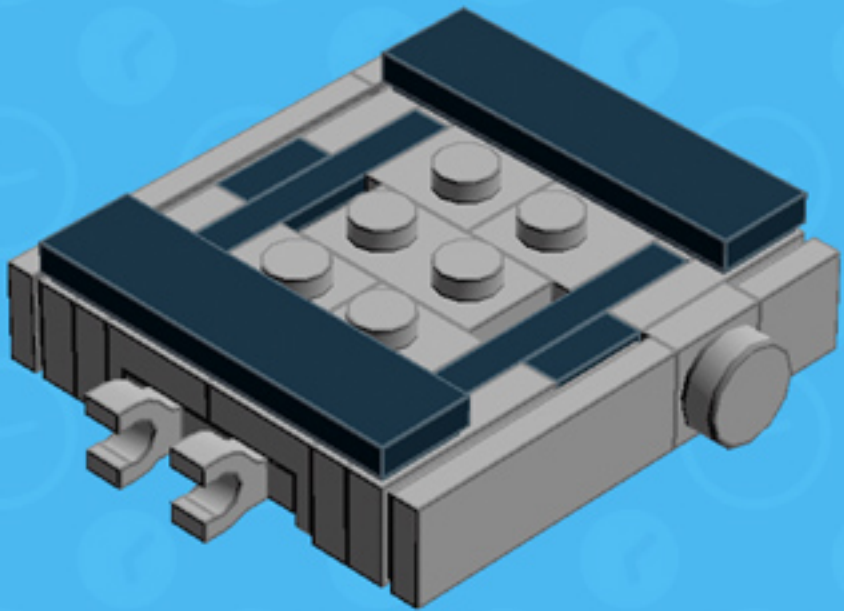


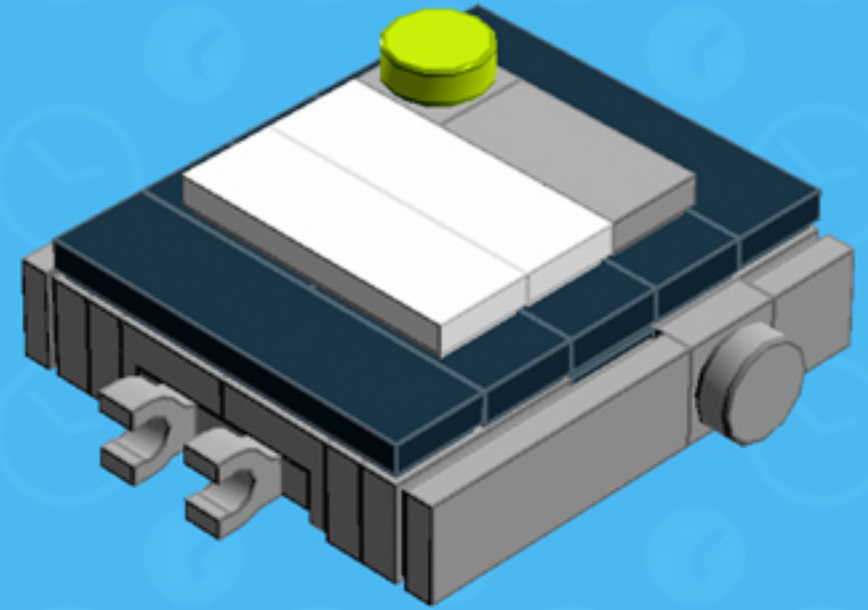
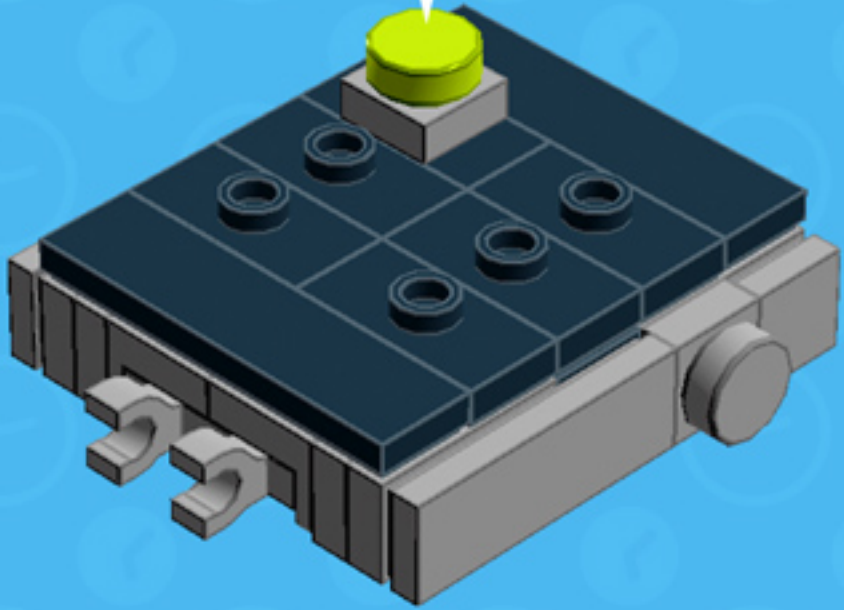


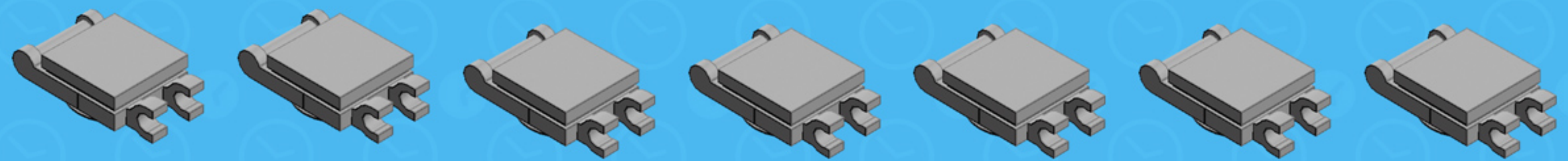
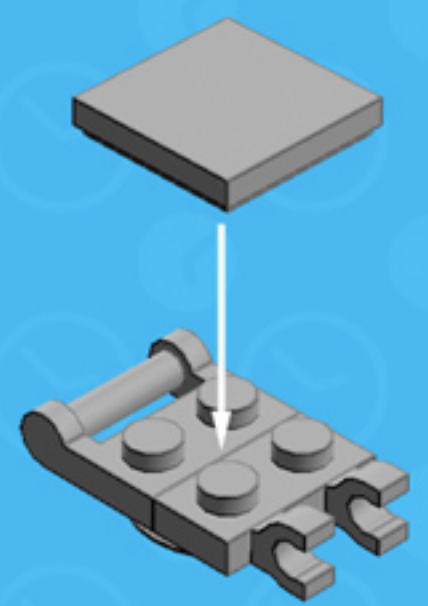
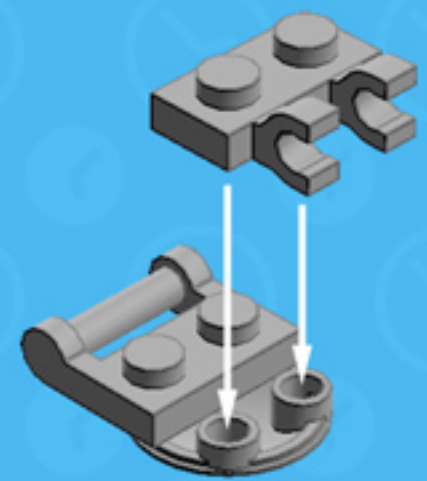




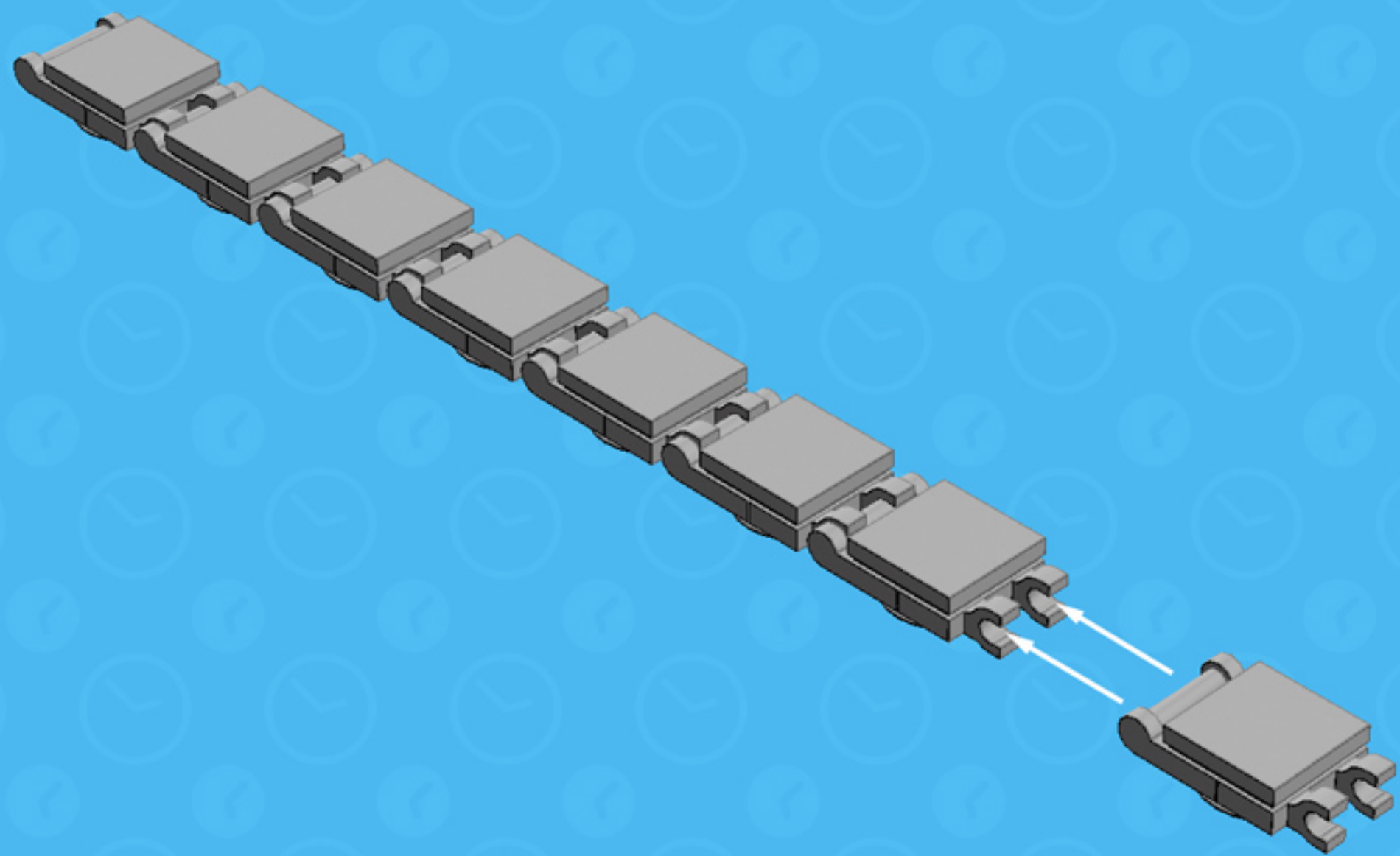




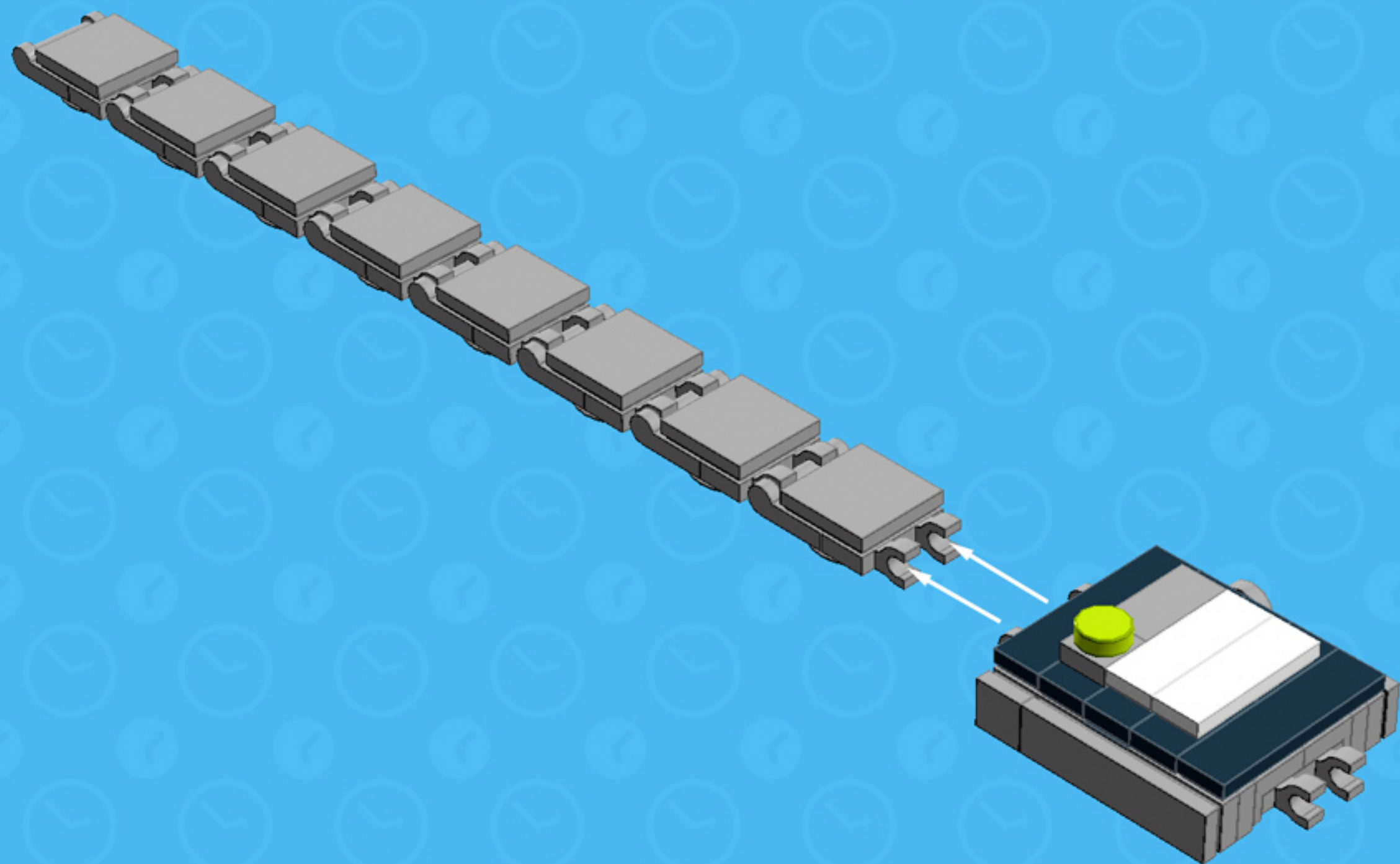


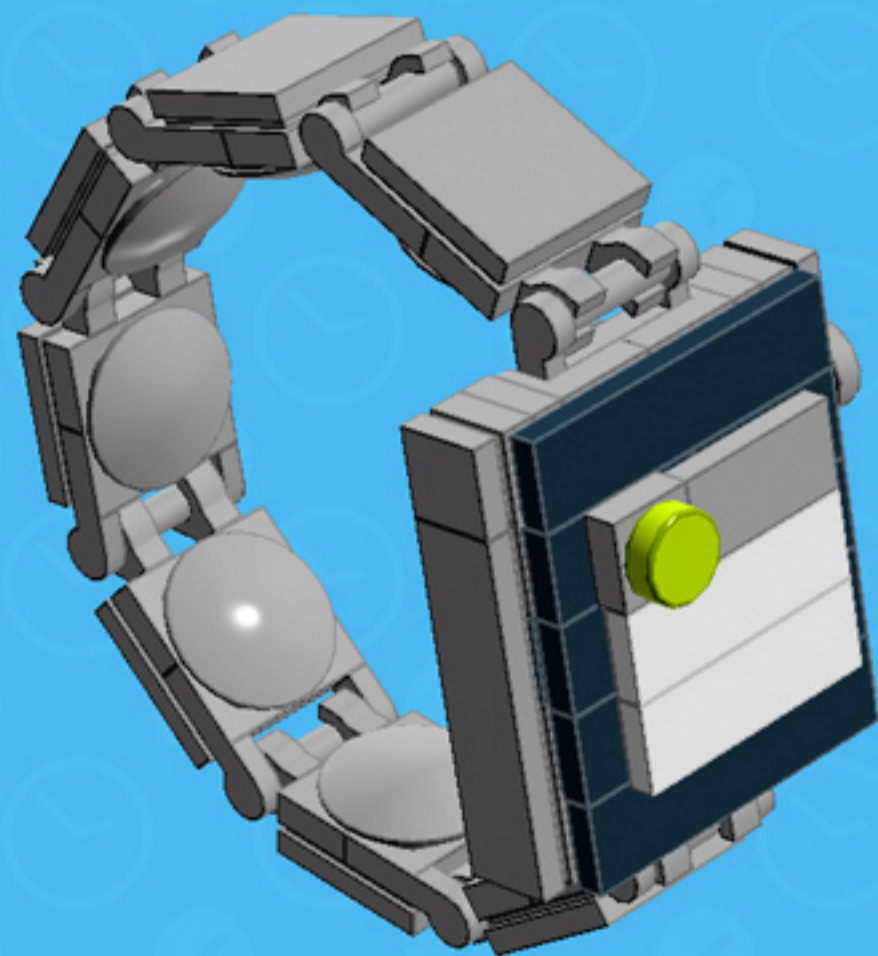
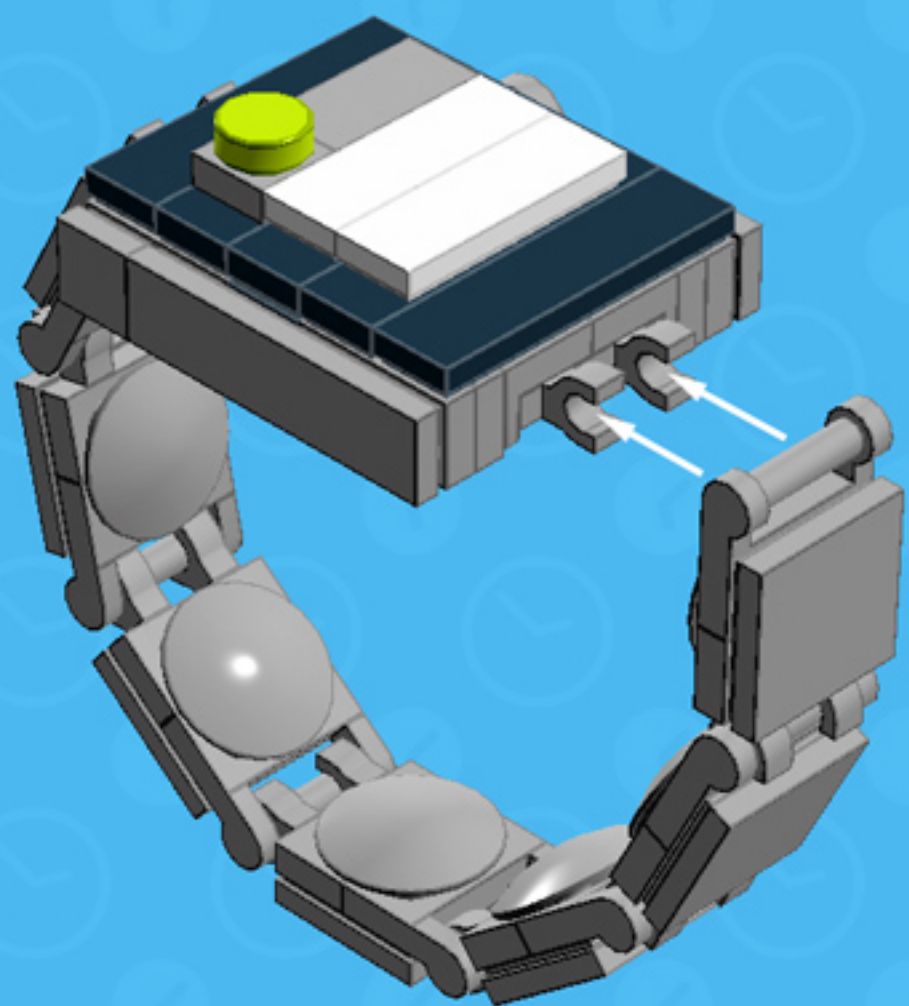


7x



7x





***For more fun builds,
please pop by chrismcveigh.com,
visit me at facebook.com/c.mcveigh.photos,
or follow me on twitter [@actionfigured](https://twitter.com/actionfigured)***

Purchase custom building kits at shop.chrismcveigh.com

These building guides are for personal use only. Unauthorized duplication, distribution and/or modification of these guides, in whole or in part, is strictly prohibited. The models contained within these guides are the copyright of Chris McVeigh, unless otherwise stated. Unauthorized reproduction of these models for resale, either in whole or as a building kit, is strictly prohibited.

© 2015 CHRIS MCVEIGH

LEGO is a registered trademark of The LEGO Group.