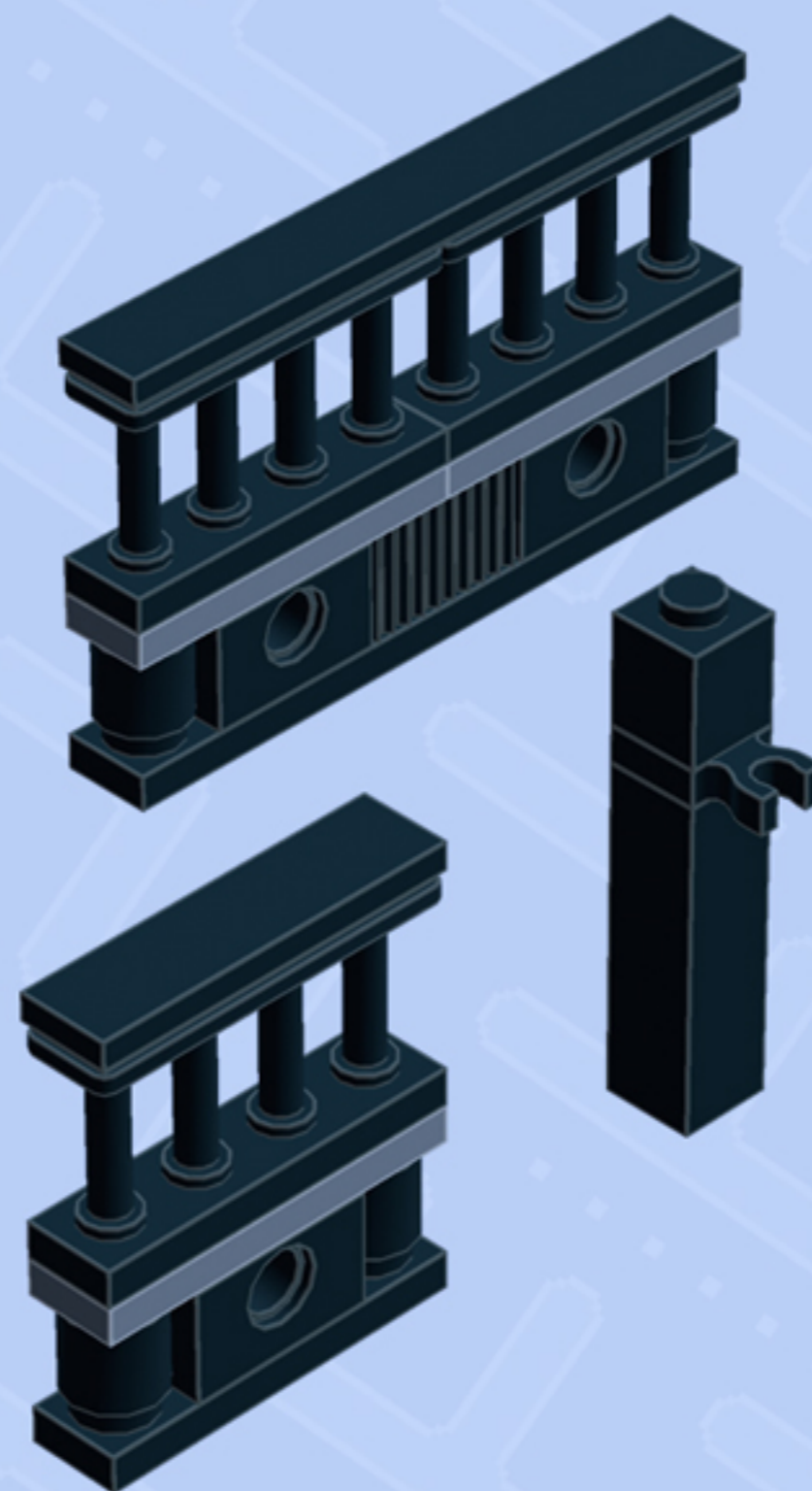


# MODULAR Arcade

## RAILING UNITS

*A LEGO® project by Chris McVeigh*  
[chrismcveigh.com](http://chrismcveigh.com)

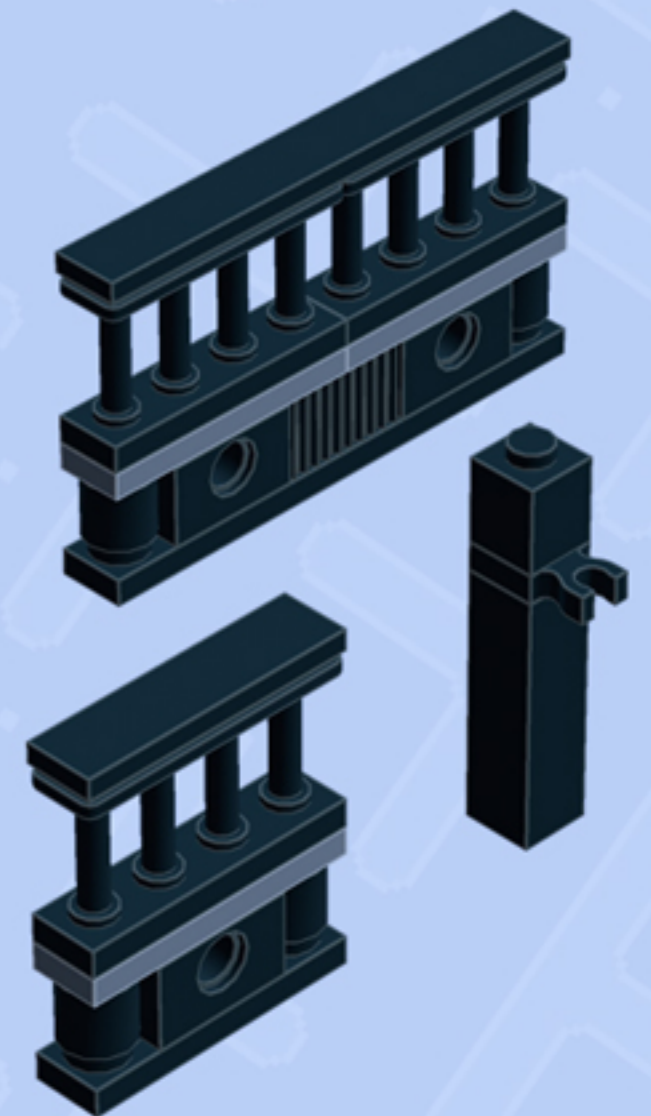


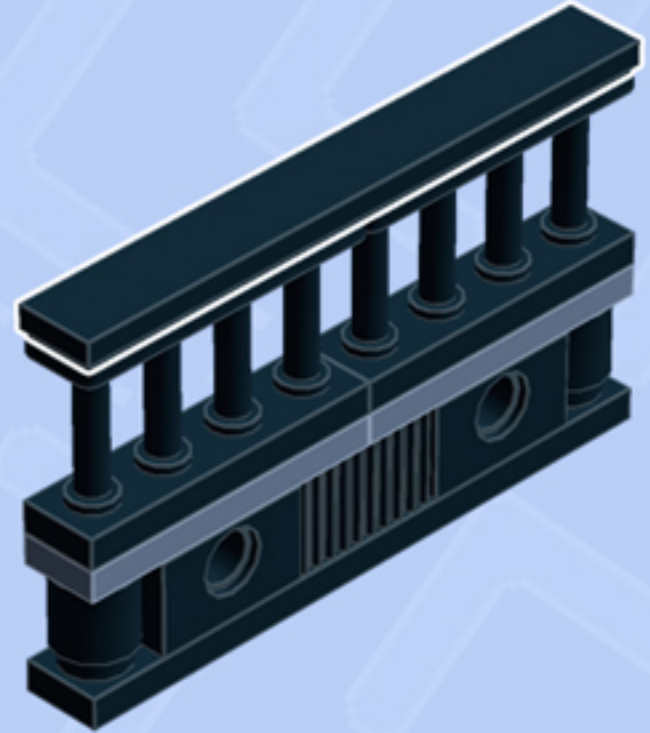
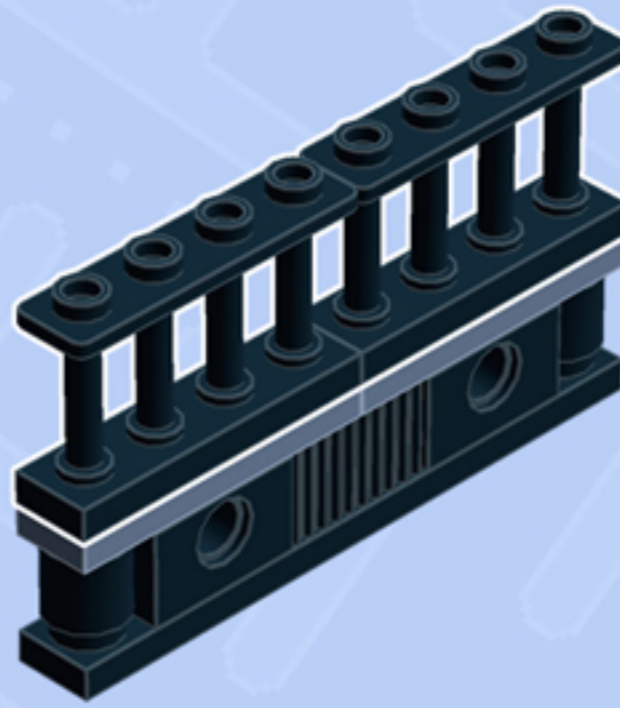
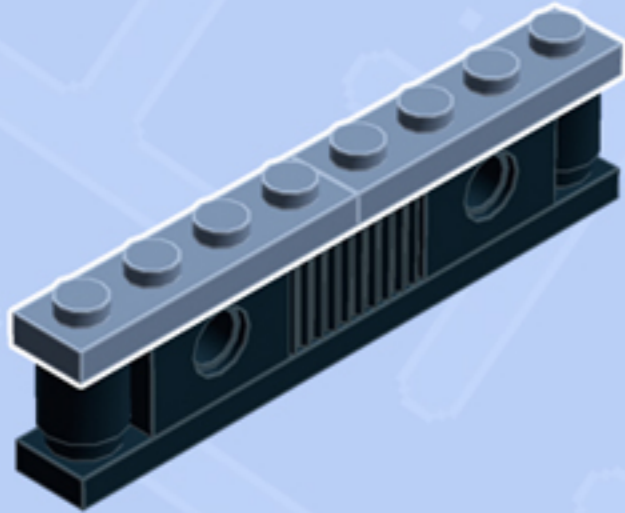
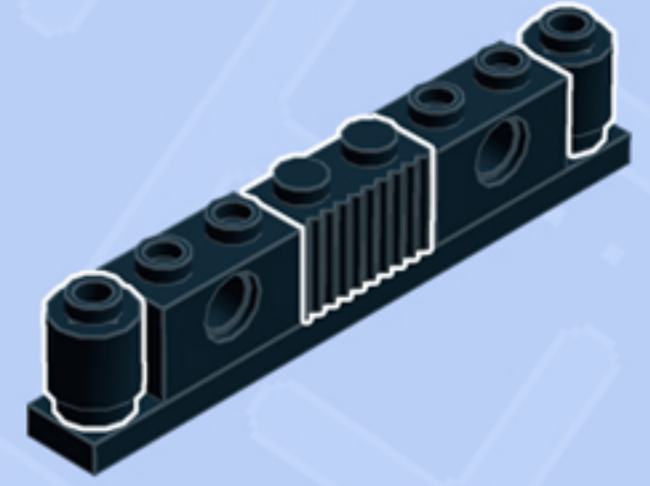
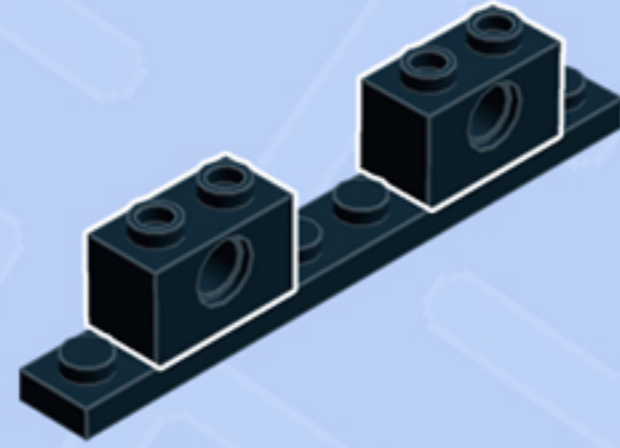
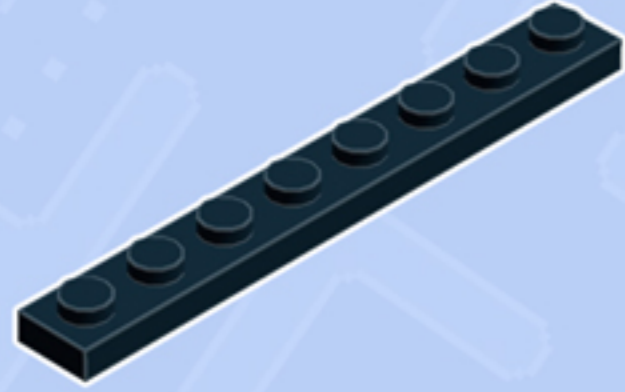


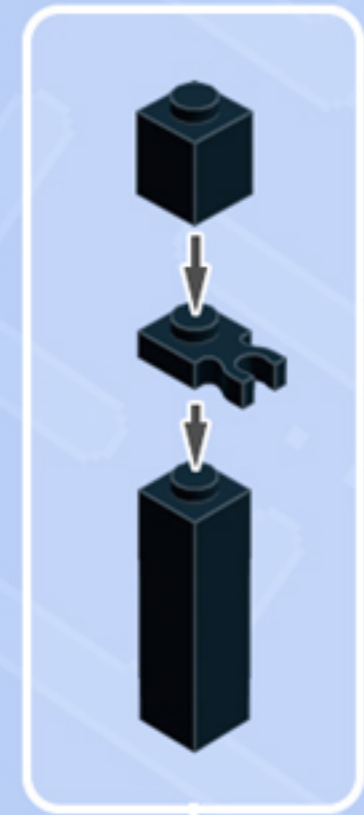
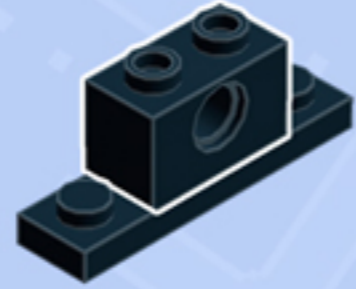
Element ID	Color	Description	Quantity
300526	Black	Brick 1X1	1
6065496	Black	Brick 1X1X3	1
4121715	Black	Connector Peg W. Friction	3
6066113	Black	Fence 1X4X2 W. 4 Knobs	3
243126	Black	Flat Tile 1X4	1
416226	Black	Flat Tile 1X8	1
4550017	Black	Plate 1X1 W. Holder	1
371026	Black	Plate 1X4	1
346026	Black	Plate 1X8	1
287726	Black	Profile Brick 1X2	1
306226	Black	Round Brick 1X1	4
370026	Black	Technic Brick 1X2, Ø4.9	3
4169412	Sand Blue	Plate 1X4	3



2018 railing units are one plate shorter than those offered in 2016/2017. This change was made so that the height of the railings now matches the height of the arcade's wainscoting. To adapt older railing units, simply remove the black plate in the middle.

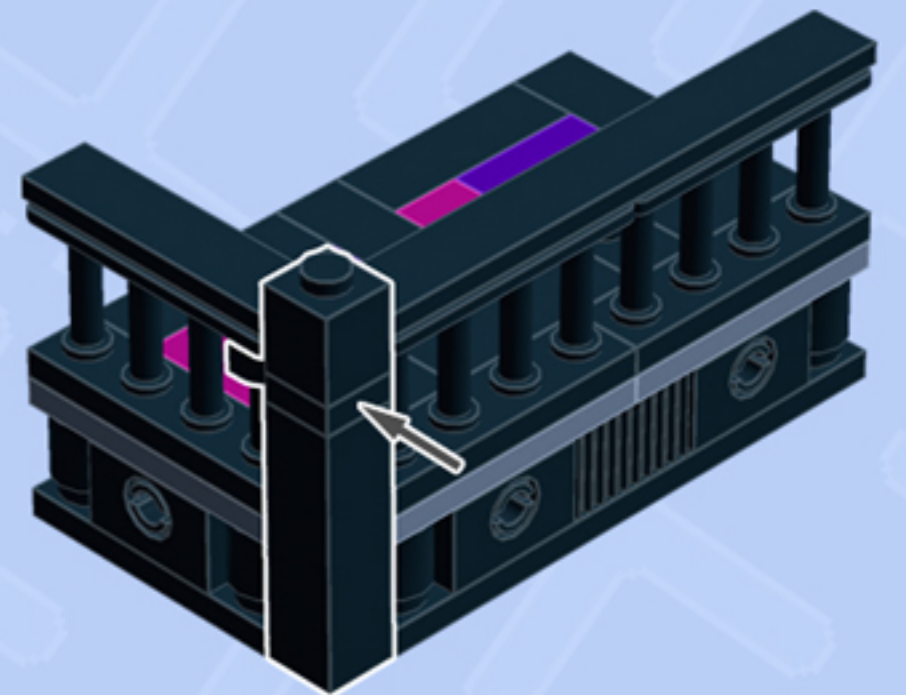
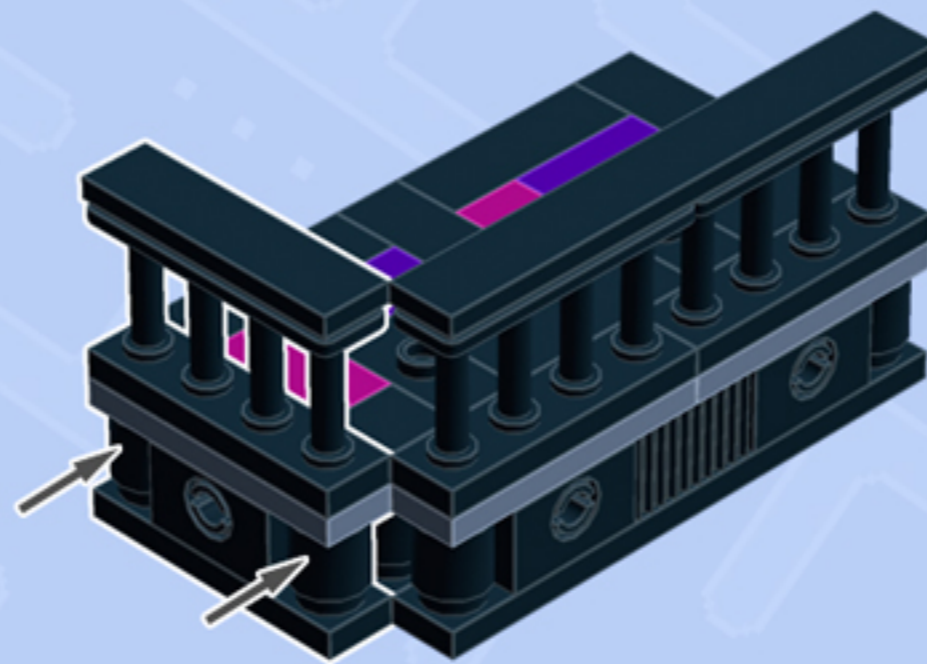
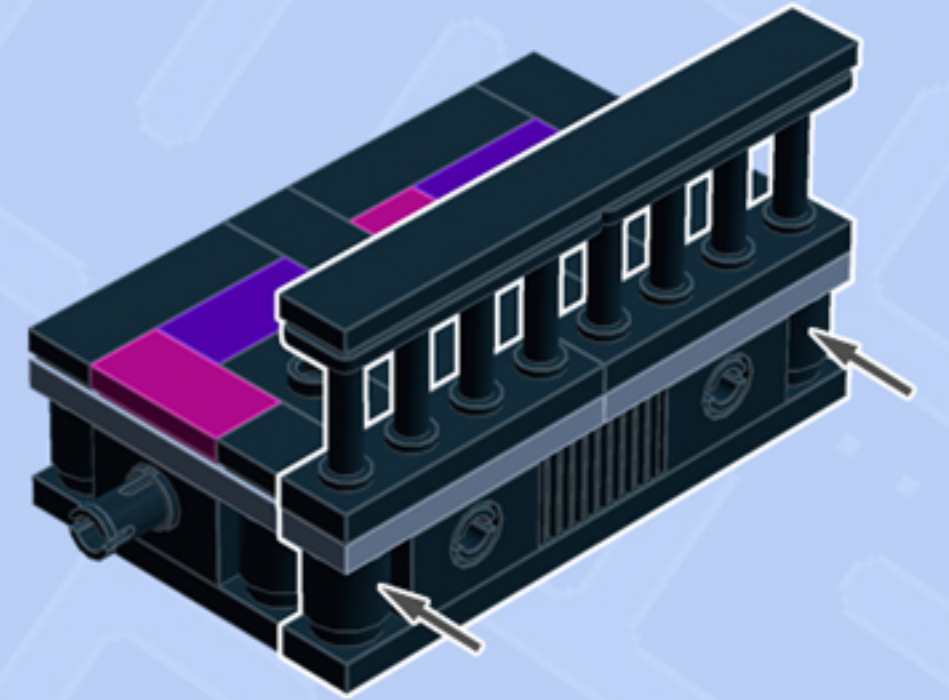
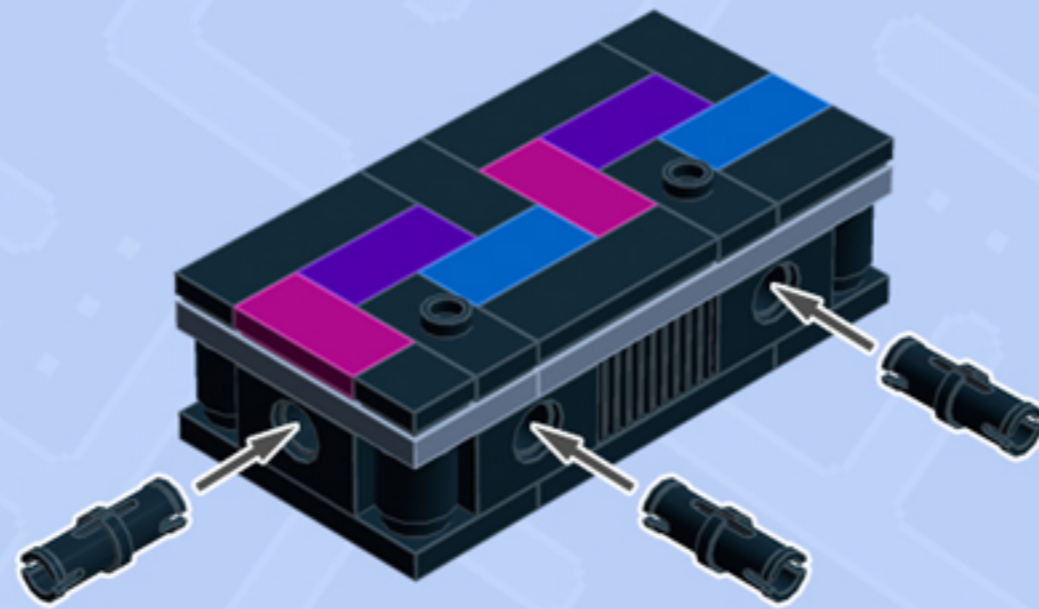
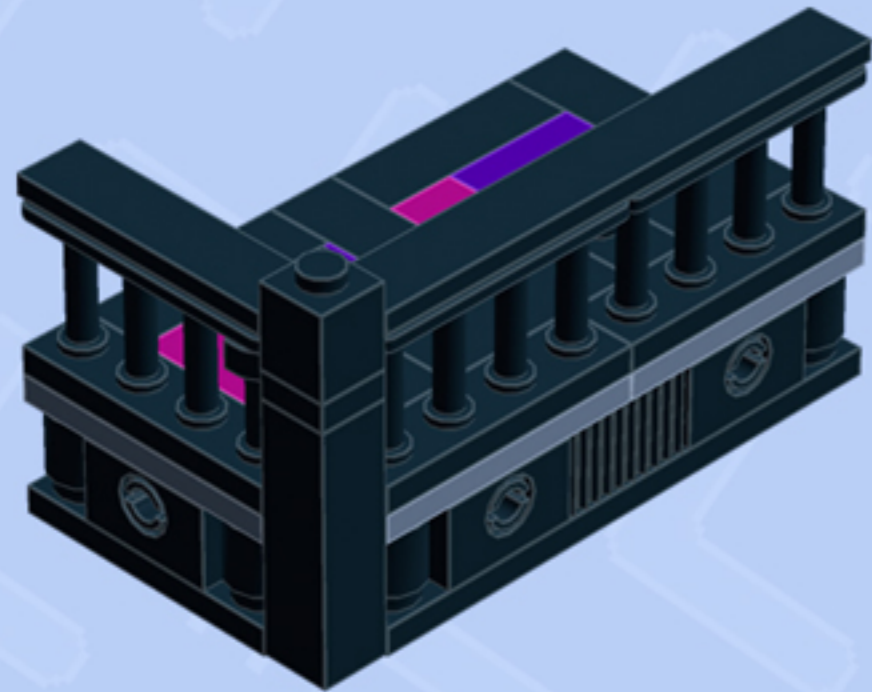








*Connect to other arcade units!*



*\*Additional units sold separately unless purchased as part of a bundle. Shown for illustrative purposes only.*

*For more fun builds,  
please stop by [chrismcveigh.com](http://chrismcveigh.com),  
visit me at [facebook.com/c.mcveigh.photos](https://facebook.com/c.mcveigh.photos),  
or follow me on twitter [@actionfigured](https://twitter.com/actionfigured)*

*Purchase custom building kits at [shop.chrismcveigh.com](http://shop.chrismcveigh.com)*

*These building guides are for personal use only. Unauthorized duplication, distribution and/or modification of these guides, in whole or in part, is strictly prohibited. The models contained within these guides are the copyright of Chris McVeigh, unless otherwise stated. Unauthorized reproduction of these models for resale, either in whole or as a building kit, is strictly prohibited.*

**© 2018 CHRIS MCVEIGH**

*LEGO is a registered trademark of The LEGO Group.*

